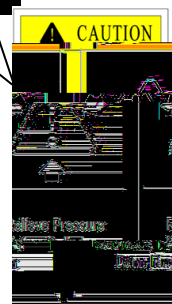
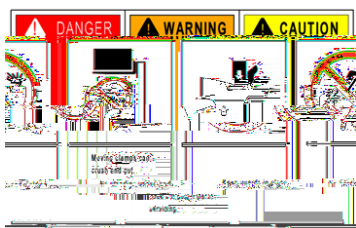
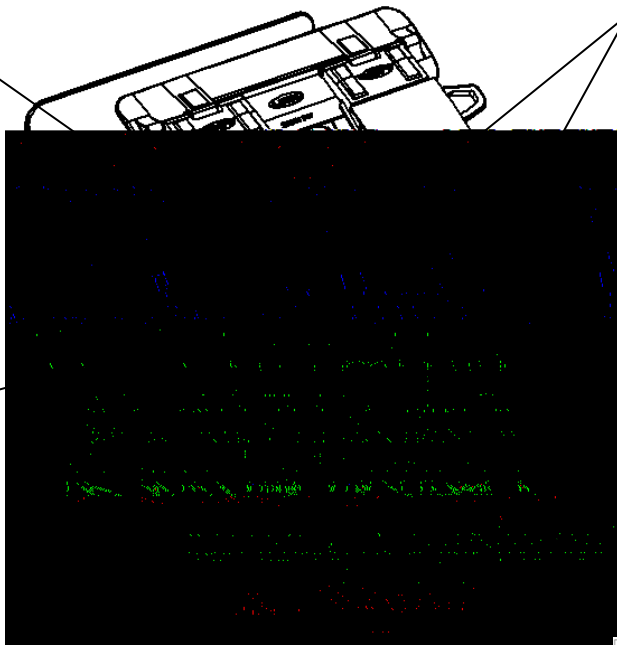
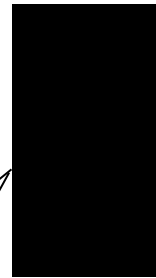
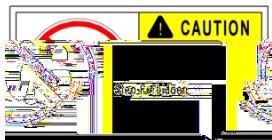

Contents

| | |
|--------------------------------|-----------|
| 1 Safety..... | 1 |
| 2 Mounting Instructions..... | 6 |
| 3 Installation Methods | 8 |
| 4 Operating Instructions | 14 |
| 5 Maintenance and conservation | |



■

■

■

■

■



■ T



 Caution

Unauthorized alterations to any parts and assembly or installation other than as specified in the instructions will render all guarantees null and void.



 Caution

All screws or bolts loosened for maintenance and repair work must be tightened at the permissible torque . Replace screws and bolts that have been retightened three times.

■

■

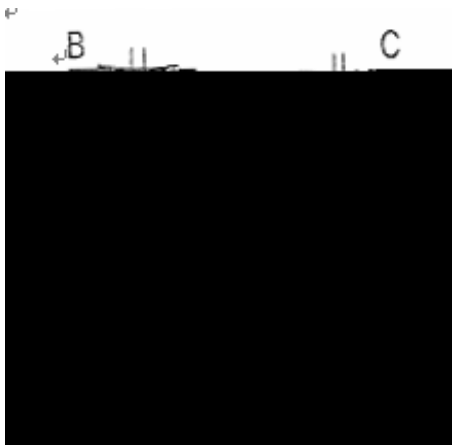
■

■

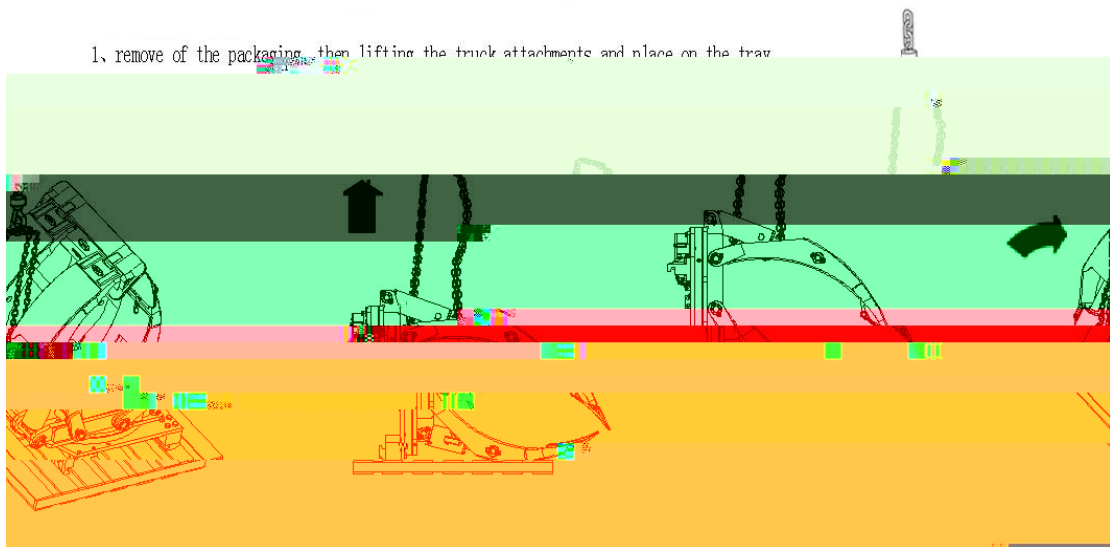
■

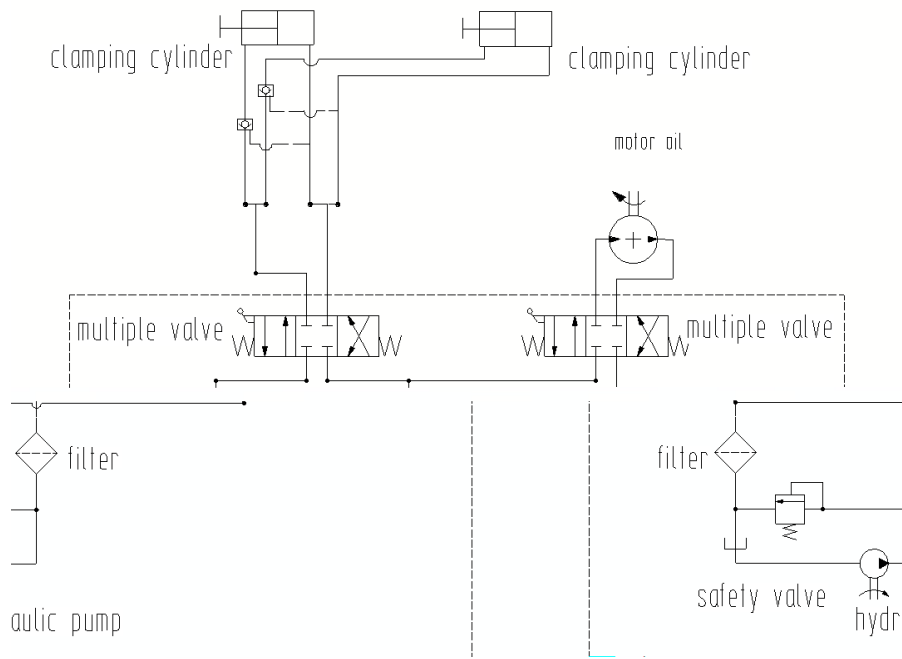
 Danger

D

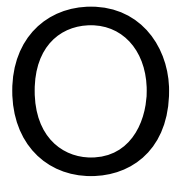


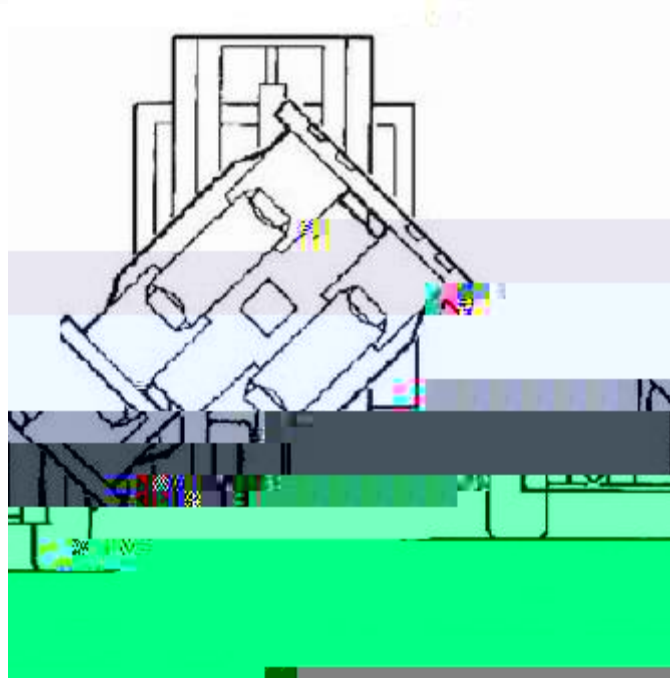
1, remove of the packaging, then lifting the truck attachments and place on the tray





Upper hook Stopper Upper crossbeam of the forklift carriage





Turn to any point of 45° to adjust the short arm

⚠ Warning

When the clamp is mounted, first apply lubrication grease and debug the clamp under zero and small load to verify it rotates and clamps correctly. The clamp will not be used normally unless it is free of any abnormality.

| | | |
|--|--|--|
| | | |
|--|--|--|

| | | |
|--|--|--|
| | | |
| | | |
| | | |
| | | |

